



# New! METALLIC INK

IT'S AS EASY AS

1, 2, 3

Create your design or pick your favorite image.

Choose which areas you want in *Metallic Ink*.

Make a separate layer of these *elements* and turn them black.



Scan me

to watch a video tutorial on how to set-up your file.

\* Metallic Ink will give your images a similar effect to printing on a Natural Metallic Base Metal. It will darken the colors in your image and skin tones will have a silver shimmer to them.

R:255 G:255 B:255	R:231 G:231 B:231	R:209 G:209 B:209	R:188 G:188 B:188	R:168 G:168 B:168	R:148 G:148 B:148	R:129 G:129 B:129
R:240 G:239 B:247	R:240 G:228 B:240	R:241 G:247 B:243	R:241 G:248 B:232	R:226 G:242 B:231	R:254 G:243 B:239	R:254 G:242 B:228
R:215 G:178 B:151	R:216 G:177 B:134	R:218 G:178 B:119	R:219 G:175 B:102	R:219 G:176 B:82	R:221 G:176 B:61	R:221 G:175 B:38
R:255 G:252 B:233	R:255 G:252 B:215	R:255 G:249 B:175	R:255 G:247 B:154	R:255 G:246 B:133	R:255 G:244 B:77	R:254 G:242 B:0
R:251 G:211 B:211	R:252 G:211 B:193	R:254 G:208 B:158	R:254 G:206 B:140	R:254 G:206 B:122	R:254 G:204 B:79	R:255 G:202 B:8
R:246 G:172 B:187	R:247 G:173 B:174	R:247 G:170 B:142	R:248 G:169 B:128	R:249 G:168 B:112	R:250 G:167 B:75	R:249 G:166 B:26
R:245 G:153 B:178	R:245 G:152 B:163	R:246 G:150 B:134	R:245 G:150 B:120	R:247 G:150 B:107	R:248 G:148 B:72	R:247 G:148 B:29
R:242 G:134 B:168	R:242 G:133 B:154	R:244 G:132 B:128	R:245 G:132 B:114	R:245 G:132 B:102	R:245 G:131 B:69	R:246 G:130 B:31
R:239 G:90 B:148	R:240 G:90 B:136	R:240 G:90 B:115	R:240 G:90 B:102	R:240 G:90 B:91	R:241 G:89 B:65	R:242 G:88 B:34
R:237 G:2 B:130	R:237 G:6 B:120	R:236 G:17 B:101	R:237 G:20 B:91	R:237 G:22 B:81	R:237 G:26 B:59	R:237 G:27 B:36
R:253 G:233 B:242	R:250 G:213 B:230	R:247 G:173 B:206	R:244 G:154 B:192	R:243 G:135 B:184	R:239 G:89 B:161	R:237 G:0 B:140
R:225 G:222 B:239	R:224 G:205 B:227	R:222 G:166 B:205	R:220 G:147 B:192	R:220 G:130 B:182	R:219 G:87 B:160	R:217 G:12 B:141
R:199 G:213 B:239	R:200 G:197 B:226	R:199 G:160 B:204	R:200 G:142 B:192	R:200 G:125 B:182	R:198 G:86 B:160	R:197 G:22 B:141
R:145 G:239 B:236	R:149 G:181 B:222	R:156 G:149 B:201	R:157 G:133 B:191	R:159 G:117 B:180	R:161 G:85 B:160	R:1 G:36 B:143

\* Numbers reflect the sRGB color space values.

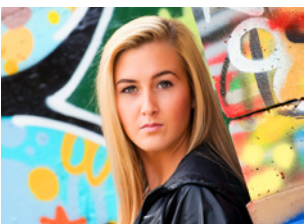
## Setting up your files!

1. Use our standard PSD guides for your press product from our website.
2. Decide which layers are going to be in Metallic Ink. These layers can be text or graphics in your design.
3. For an area of Metallic Ink that matches the swatches seen here, use the RGB values provided.
4. Save out a JPG of your entire design at the highest image quality. (Level 12)
5. Turn off the layers that aren't Metallic Ink. Make the remaining layers black. Save out a JPG of only the areas you want metallic at the highest image quality. (Level 12)

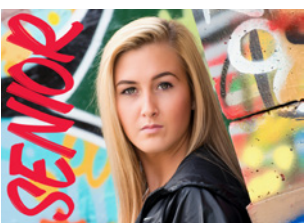
Now you're ready to order through the ACI FLEX or MyACI software!



Original Image  
© Photo Innovations



Full Flood Metallic Ink Image



Select Area of Metallic Ink  
with Selected RGB Value  
R:237 G:26 B: 59

R:116 G:190 B:235	R:122 G:174 B:222	R:132 G:145 B:200	R:135 G:129 B:189	R:137 G:115 B:179	R:143 G:82 B:160	R:146 G:39 B:143
R:83 G:183 B:232	R:92 G:169 B:221	R:108 G:140 B:199	R:112 G:126 B:189	R:117 G:112 B:179	R:124 G:81 B:161	R:129 G:41 B:145
R:1 G G:171 B:230	R:6 G:159 B:219	R:35 G:133 B:198	R:45 G:120 B:188	R:64 G:106 B:180	R:82 G:78 B:162	R:92 G:46 B:145
R:0 G:161 B:229	R:0 G:148 B:218	R:1 G G:125 B:199	R:0 G:114 B:187	R:0 G:101 B:179	R:12 G:76 B:163	R:46 G:49 B:146
R:226 G:244 B:254	R:199 G:234 B:253	R:141 G:246 B:248	R:108 G:207 B:246	R:63 G:200 B:244	R:1 G G:186 B:242	R:0 G:173 B:239
R:228 G:241 B:213	R:204 G:231 B:212	R:149 G:214 B:210	R:120 G:205 B:208	R:85 G:197 B:209	R:1 G G:183 B:205	R:1 G:171 B:206
R:232 G:238 B:174	R:208 G:229 B:173	R:155 G:211 B:174	R:127 G:203 B:175	R:93 G:195 B:174	R:1 G G:182 B:173	R:1 G:170 B:173
R:232 G:236 B:152	R:207 G:227 B:155	R:157 G:210 B:156	R:129 G:202 B:156	R:99 G:193 B:156	R:5 G:181 B:158	R:1 G:168 B:158
R:234 G:236 B:135	R:211 G:228 B:136	R:159 G:209 B:138	R:132 G:200 B:139	R:103 G:193 B:141	R:14 G:180 B:142	R:0 G:168 B:142
R:235 G:234 B:84	R:212 G:226 B:91	R:162 G:208 B:99	R:137 G:199 B:102	R:108 G:192 B:104	R:27 G:178 B:107	R:0 G:168 B:109
R:237 G:232 B:16	R:216 G:223 B:32	R:166 G:206 B:57	R:140 G:198 B:62	R:113 G:191 B:69	R:33 G:178 B:75	R:0 G:166 B:82
R:232 G:132 B:168	R:220 G:129 B:162	R:201 G:125 B:155	R:182 G:122 B:148	R:163 G:118 B:141	R:142 G:115 B:150	R:125 G:112 B:132
R:230 G:228 B:171	R:207 G:210 B:157	R:161 G:178 B:142	R:140 G:156 B:130	R:121 G:138 B:119	R:74 G:117 B:108	R:1 G:101 B:99
R:214 G:218 B:229	R:188 G:192 B:217	R:167 G:152 B:195	R:148 G:131 B:183	R:129 G:114 B:173	R:115 G:81 B:157	R:102 G:45 B:140

\* Numbers reflect the sRGB color space values.